

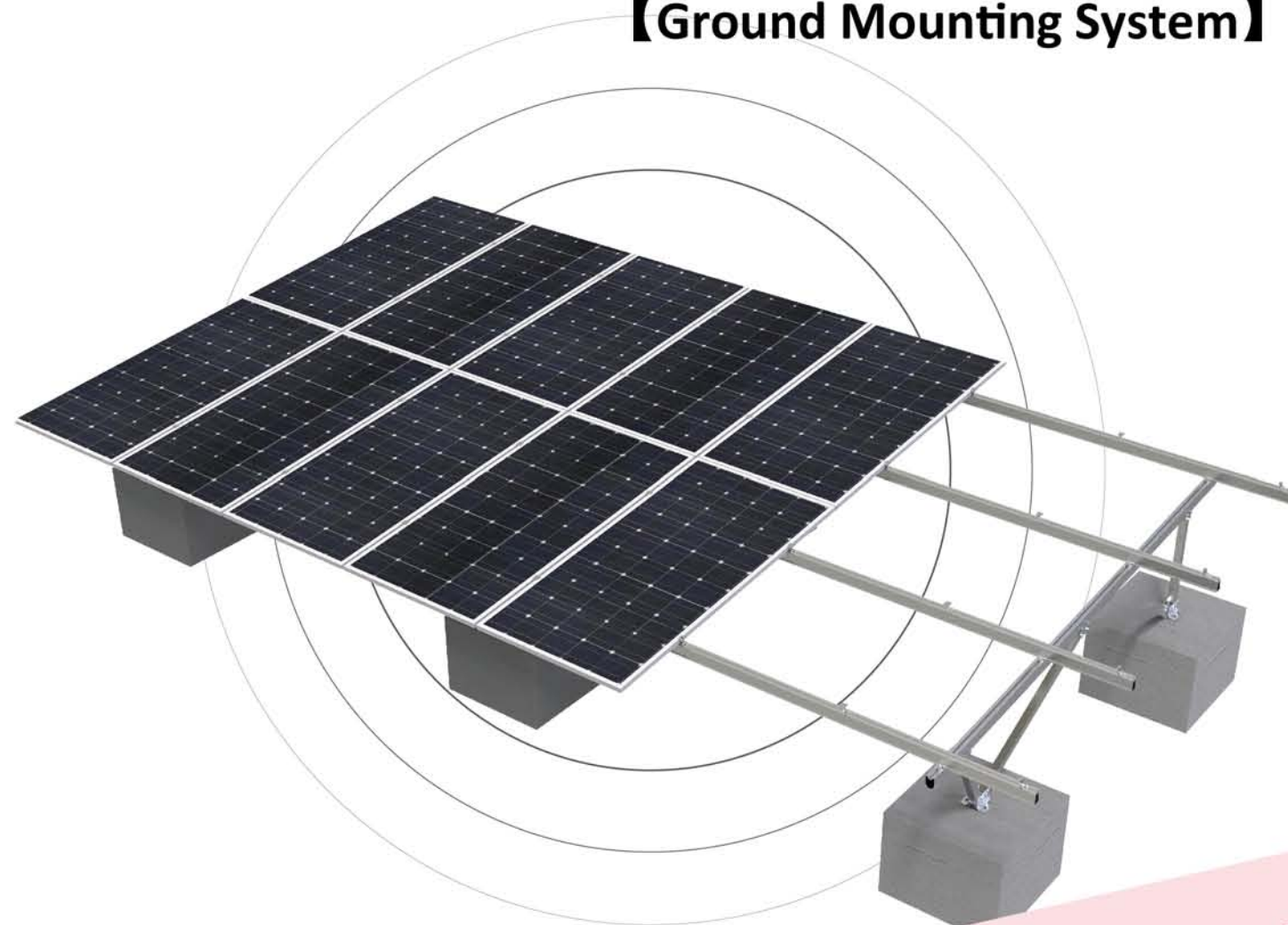
Main Markets



SOLAR PANEL BRACKETS

PV MOUNTING SOLUTIONS

【Ground Mounting System】



XIAMEN UNIVERSE SOLAR TECHNOLOGY CO.,LTD

Add.: Rm. 704, Building A02, Phase 3, Software Park, Jimei, Xiamen, Fujian, China

Web: www.uisolar.com Email: sales@uisolar.com

Tel: +86-592-566-3849 Fax: +86-592-517-0790



XIAMEN UNIVERSE SOLAR TECHNOLOGY CO.,LTD



COMPANY PROFILE

Why UISOLAR?

01 Reasonable Design and Solution

All the solution will be designed based on strict strength calculation.

02 High Quality

All the goods will be tested before shipment and most of the goods will be pre-assembled.

03 Best Service

We will response to you within 24H, for any feedback both before and after sales.

04 Certificate Support

For Customer's need, we have got so many certificates and inspections for our products.

Universe Solar (UISOLAR) is a high-tech enterprise specializing in the development, manufacturing, and marketing of photovoltaic racking solutions, including Pitched Roof Mounting Solutions, Flat Roof Mounting Solutions, Ground Mounting (both for Aluminum and Steel) Solutions and Solar Carport.

With the Principle of " Innovative, Environment Friendliness and Responsibility ", UISOLAR set up in 2010 in Xiamen, China.

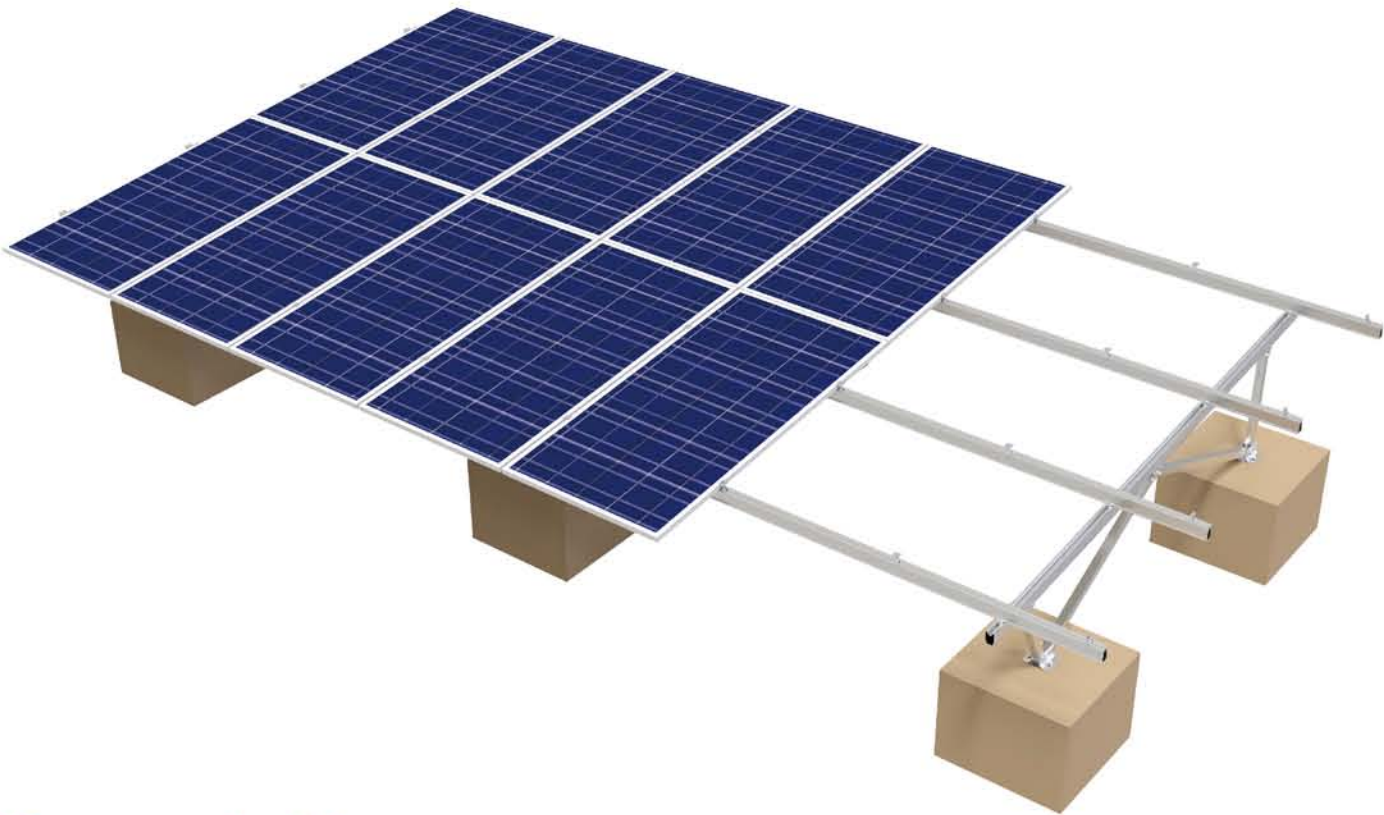
In order to provide the high quality and easy installation products, all the products are offered the strength calculation and tested by QC before shipment, and most of the products are pre-assembled before the shipment to save the installation time.

With our top quality and service, UISOLAR mountings are welcomed by most of the installers, distributors, and EPC all around the world.

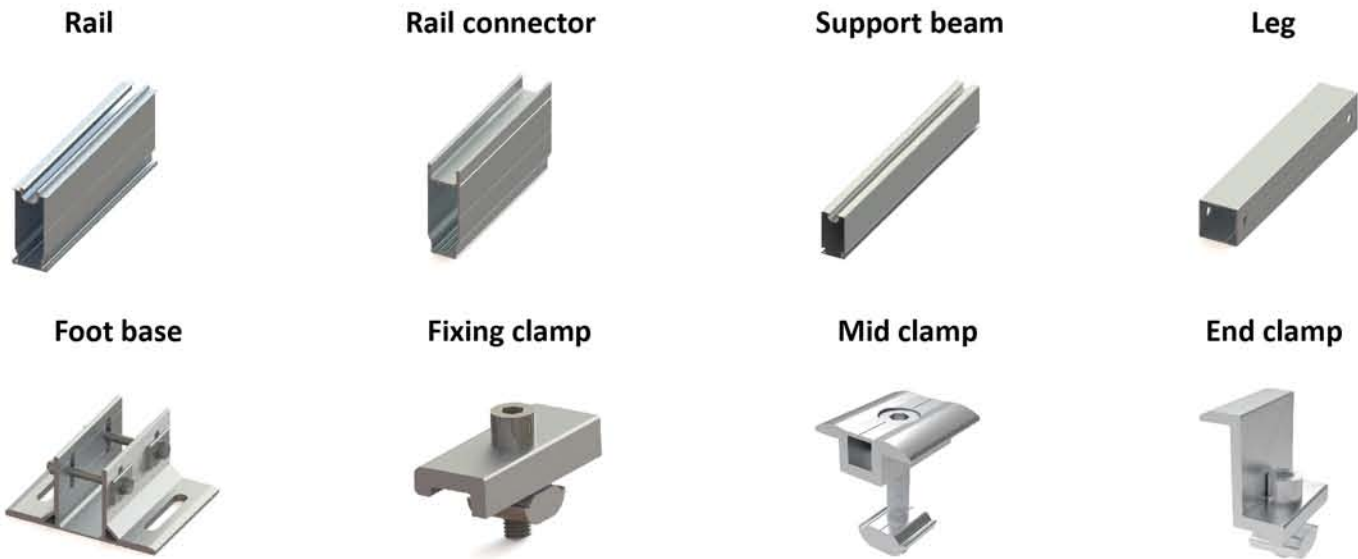
CATALOGUE

01-02	ST3H Aluminum Solar Ground Mounting
03-04	ST2 Pile Ground Mounting
05-06	ST6 Steel Ground Mounting
07-08	Aluminum Carport
09-10	BIPV Waterproof Solar Carport
11-12	Single Pole Solar Carport
13-14	Agricultural Solar Mounting
15-16	Fence -- Triangle Bending Fence
17-18	Fence -- Half Circle Fence
19-20	Ground Screw
21-26	Components
27-28	Projects

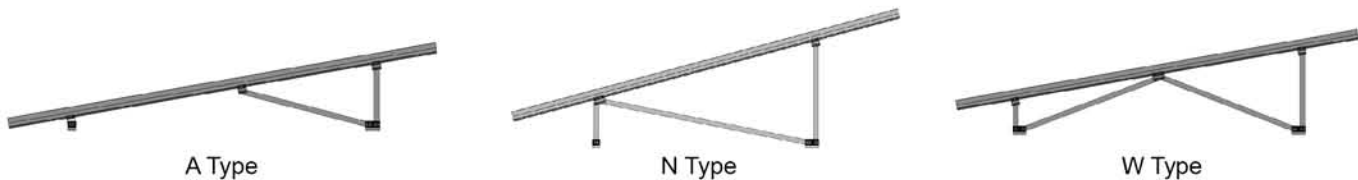
Solar ground mounting is usually applicable to the open field, not only residential project, but also big commercial project. It is featured with lightweight, strong, and recyclable material, and the pre-assemble support rack save your time and labor cost.



Components List



Mounting Structure Types



Ground screw foundation



Concrete foundation



Technical Data

Installation site :	Open field/Ground
Module angle :	0~60 degree
Max wind speed :	Up to 60m/s
Max snow load:	Up to 1.4KN/m2
Material :	AL6005-T5 &SUS304
Module orientation :	Landscape, Portrait
Foundation :	Concrete base, Ground screw
Standard :	AS/NZS S1170, JISC8955:2017, EU Standard

Advantages

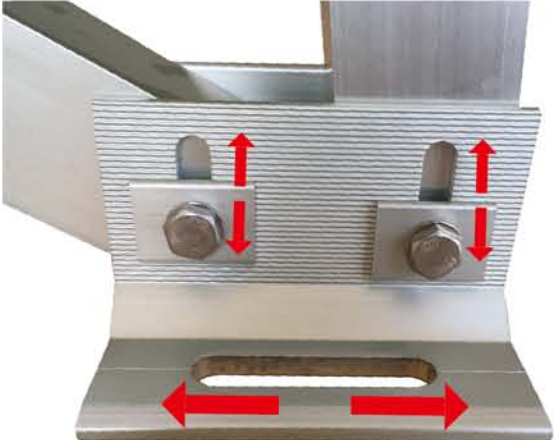
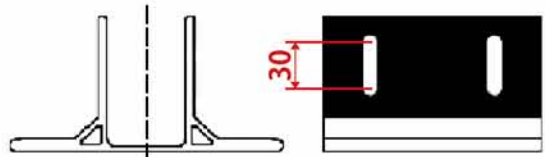
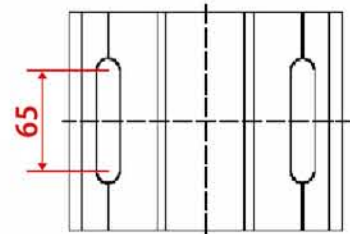
1. High pre-assembled, save cost and time

Beam and reinforced leg are pre-assembled before shipment to save the installation time and cost.



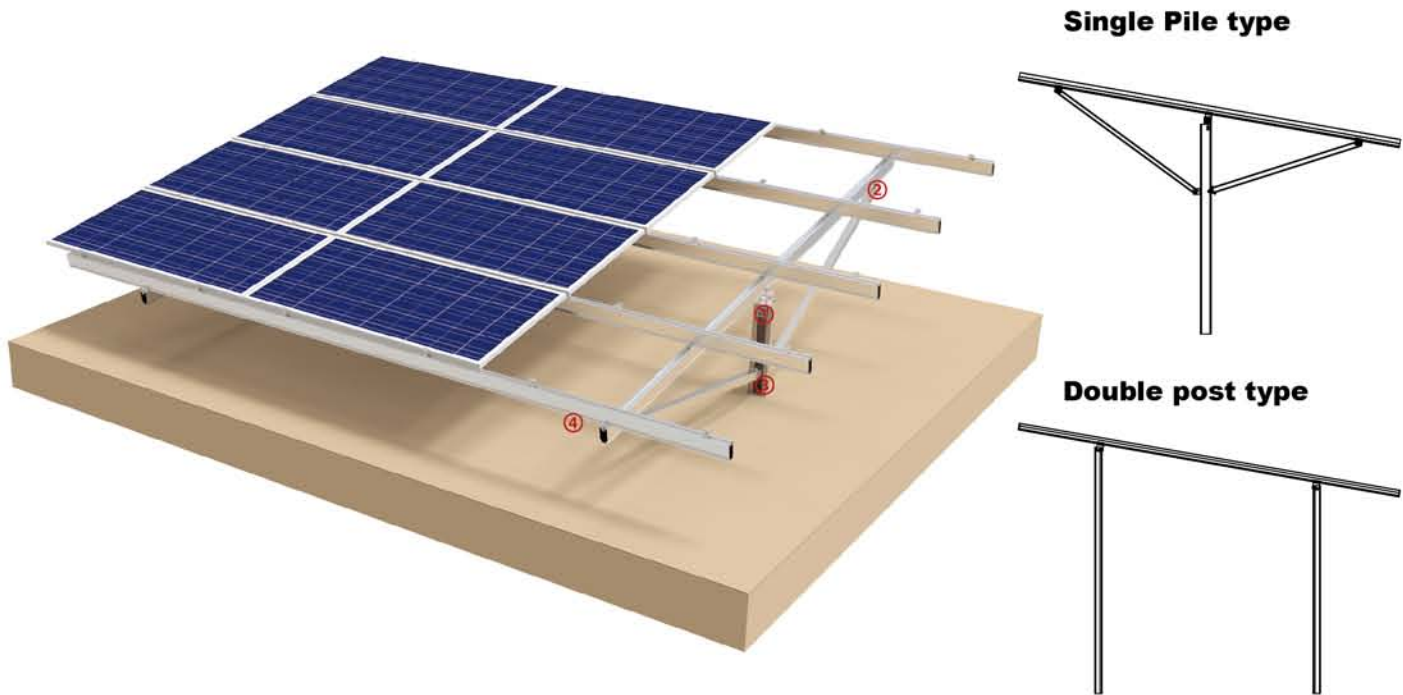
2. Installation correction

The design of the long hole of the foot base is conducive to the adjustment of installation error.



Pile Ground Mounting (Aluminum+Steel)

Pile ground mounting is designed for servicing to large-scale solar farm MW projects with its cost-effective and easy installation.
No ground screw or concrete base are needed. However, it uses the pile column as foot, and have its foot firmly grounded.



① Post with rack details

② Rack with bracing support details

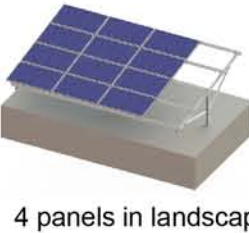
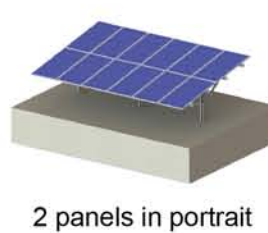
③ Post with bracing support details

④ Racking and rail with adjustable connection

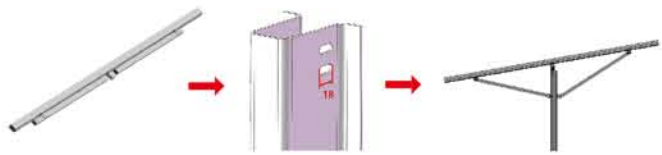


Advantages

1. More flexible for panel layout

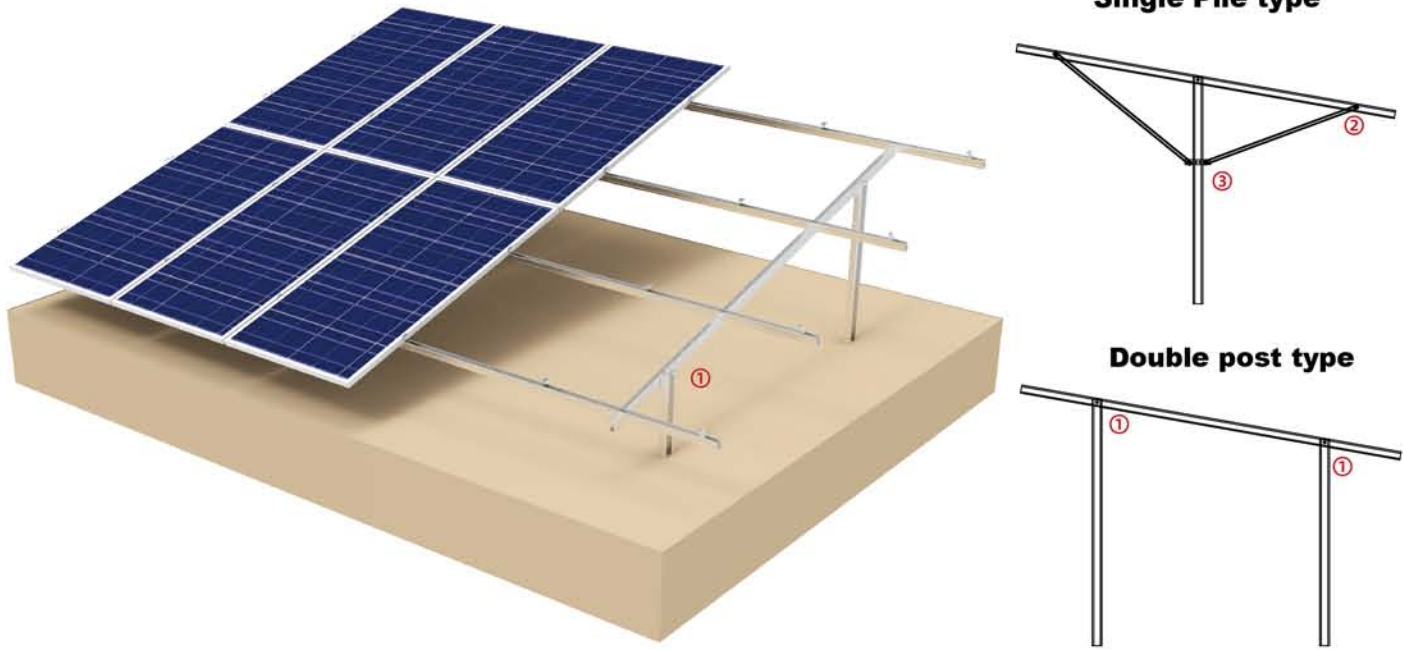


2. Pre-assembled structure makes the installation to be easier and lower cost.



ST2 Pile Ground Mounting (Steel)

Pile ground mounting is designed for servicing to large-scale solar farm MW projects with its cost-effective and easy installation.
No ground screw or concrete base are needed. However, it uses the pile column as foot, and have its foot firmly grounded.



① Post with rack details

② Rack with bracing support detail for single post type

③ Post with bracing support detail for single post type



Advantages

- 1. High quality and durability materials are used.
- 2. Minimum material use and installation costs.
- 3. More flexible for the installation.

Technical Data

Installation site :	Open field / Mountain
Module Angle :	0~45 degree
Max wind speed :	Up to 60m/s
Max snow load :	Up to 1.4KN/m2
Material :	Aluminum / Steel
Height:	Customized
Foundation :	Pile
Standard :	AS/NZS S1170 , JISC8955:2017, EU Standard



Material shape

ST6 Steel Ground Mounting is usually applicable to the open ground. With high quality steel material, the strength will be very good.



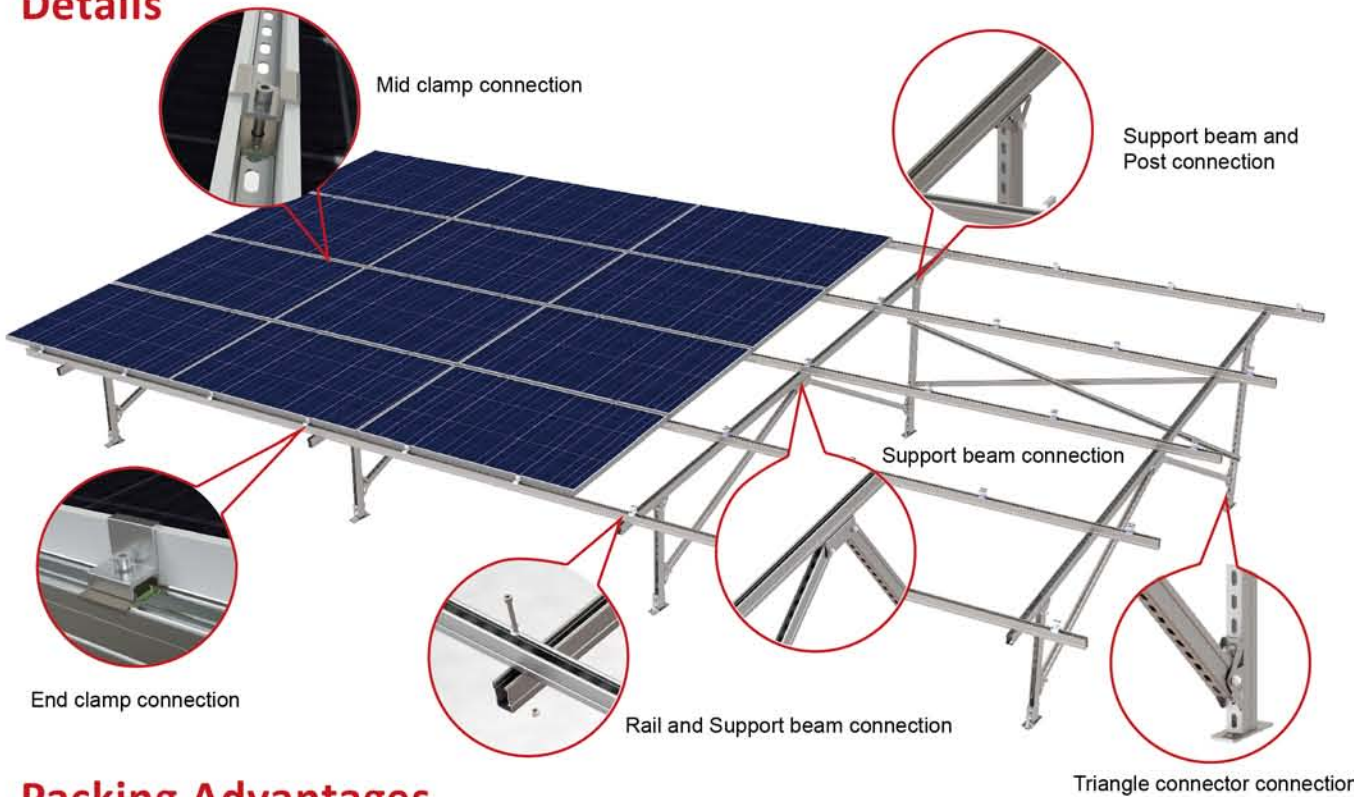
Components List



Technical Data

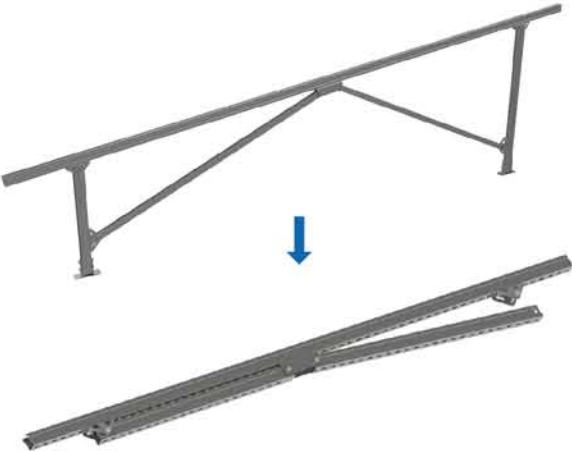
Mount type :	Ground Mounting Solar Panel Systems
Applicable site :	Open field
Applicable module :	Framed or frameless panel
Module orientation :	Landscape or portrait
Max wind load :	Up to 130mph(60m/s)
Max snow load :	Up to 1.4KN/m2
Material :	Q235B or ZAM & Stainless Steel 304
Tile angle :	0-60 degrees
Warranty :	10 years

Details



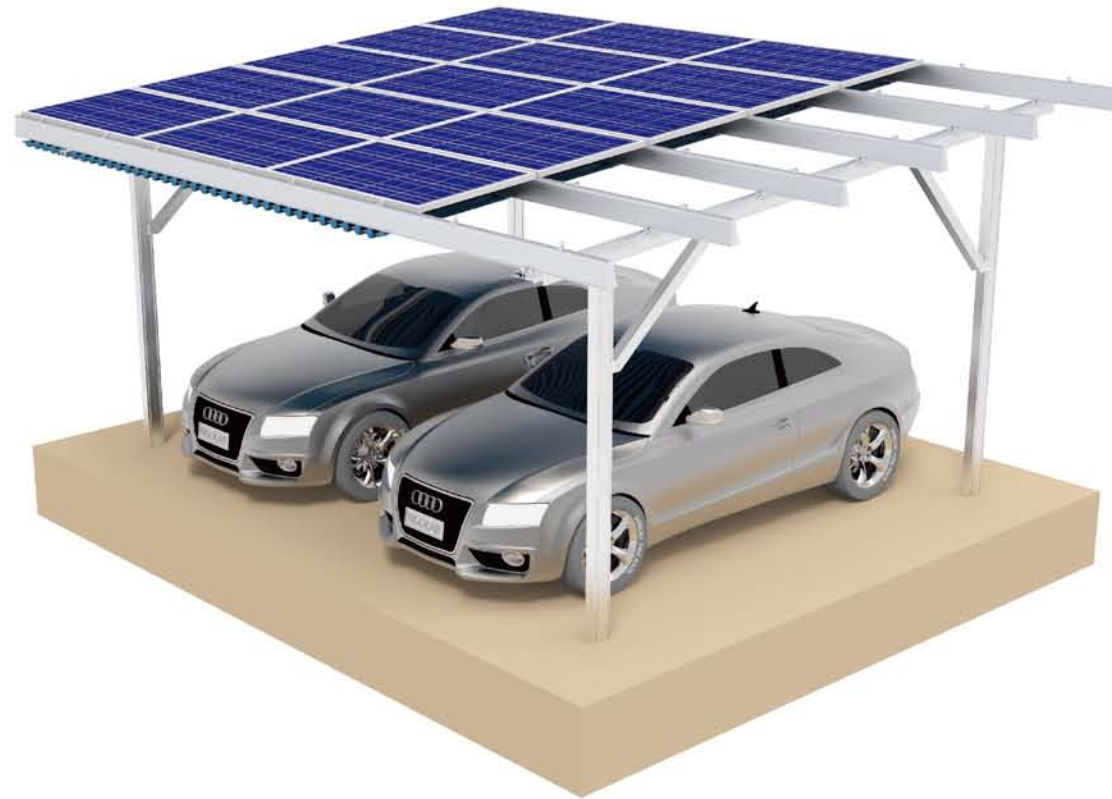
Packing Advantages

The Support Beam are pre-assembled before shipment to save the installation time and cost.



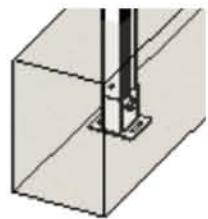
Aluminum Carport (Four Poles Carport)

The four poles carport mounting system is designed for scratch-resistant car doors. The whole structure is made of aluminum and fastener will be stainless steel. The capacity can be customized according to customers requirements. Concrete base or ground screw foundation are both available.

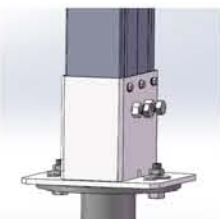


Connection Details

Pole and concrete/ground screw foundation



Pole and Beam



Beam and Rail



Features

Allow to park from all directions



Aluminum Carport (N/W Carport)

25 YEARS
SERVICE LIFE

10 YEARS
WARRANTY

Solar aluminum carport can be used for both commercial and residential area. The whole structure is made of aluminum and stainless steel fastener. It can be waterproof and windproof, customized available.

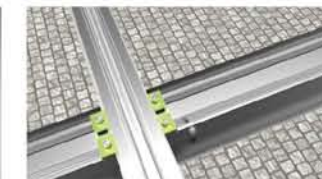


Connection Details

Rail splice connection.



Fix beam and rail with UI-Clamp-F.



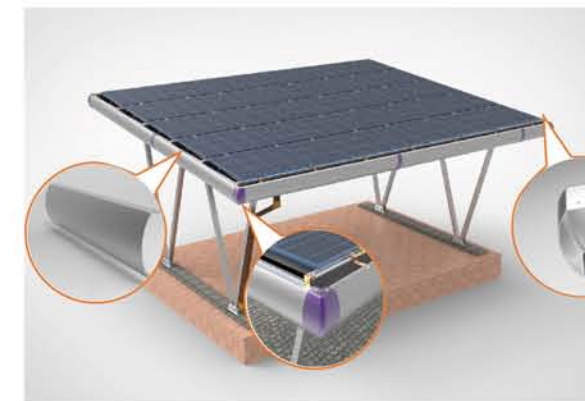
Fix panel and rail with mid/end clamps.



Foot base fixed on concrete with Embedded Anchor Bolt.

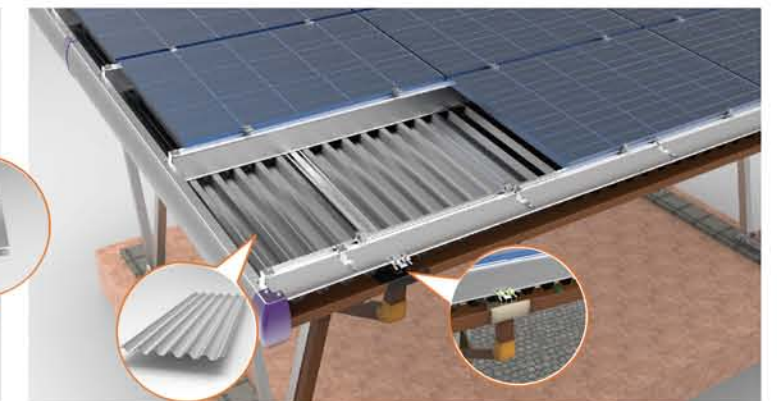


Waterproof & Windproof Function



Windproof

1. Wind deflector is added on each direction to protect the structure from wind and rain effectively.
2. It makes the whole structure a better outlook.



Waterproof

1. Waved metal sheet makes the water outflow to the water channel.
2. Water pipe drain away the water on channel.

BIPV Waterproof Solar Carport Mounting System is a highly pre-assembly system which is suitable for both residential and commercial projects. While protecting the car from rain, snow, wind and frost damage, it can also provide power generation benefits, which can power for the electric cars. The whole structure is made of aluminum and fastener will be stainless steel. The capacity can be customized according to customer's requirements.



Components List

UI-Pole



UI-Beam



UI-R



UI-R-SP



UI-Clamp-F



UI-EC (5A)



UI-IC (5A)



UI-Feet



Waterproof drainage system

UI-DP



UI-DP-SP

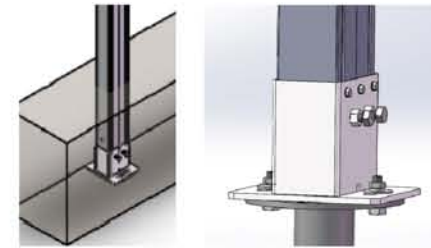


UI-MP



Connection Details

Pole and concrete/ground screw foundation



Pole and Beam

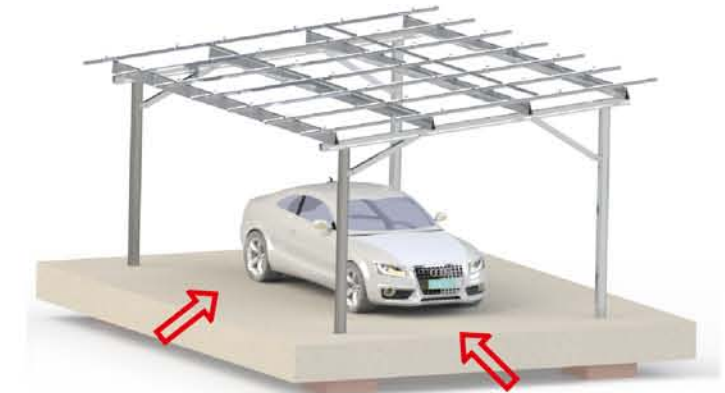
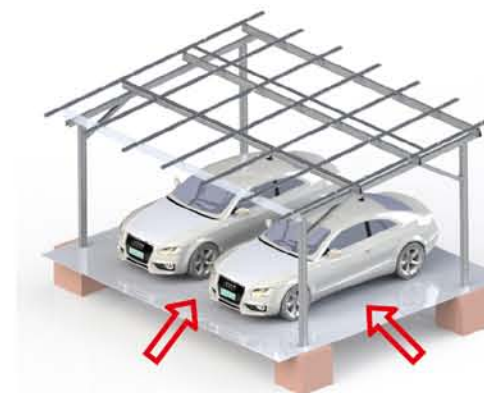


Beam and Rail



Features

Allow to park from all directions



Waterproof solution



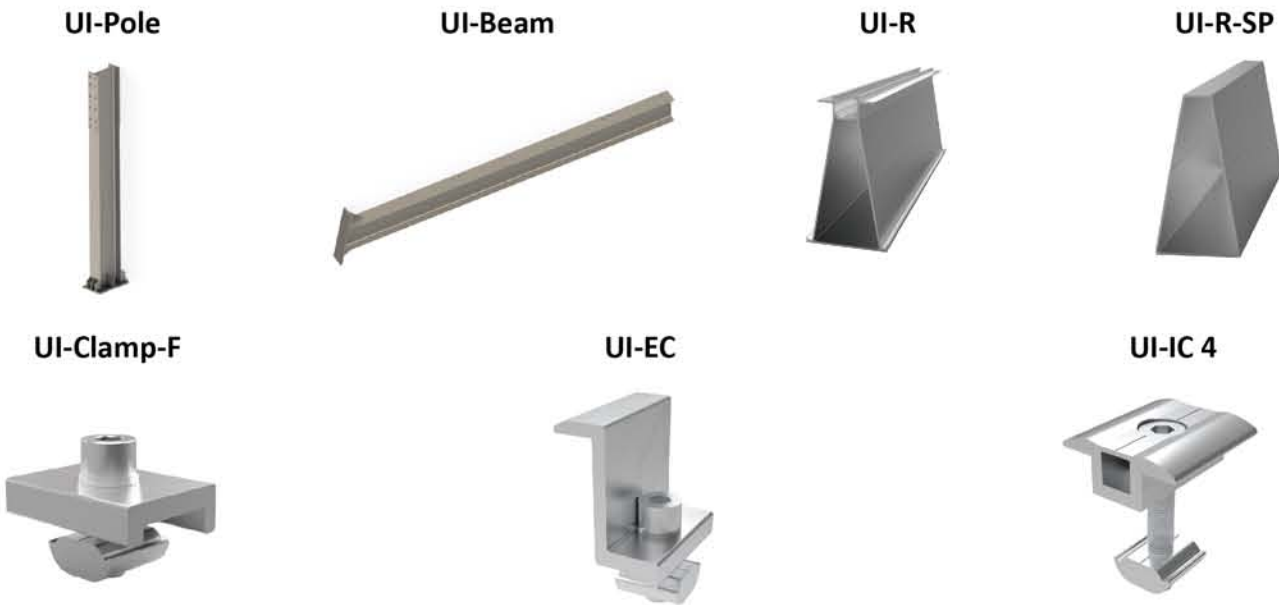
Installing the horizontal drainage pipe and margin plate to drain away water. The structure itself is waterproof, no need for additional waterproof sheet.

UISOLAR single pole carport is designed for both commercial, utility and residential carport structures with easy installation and highly- preassembling. No welding and cutting are needed for the installation.

- Advantage
- 1. Highly pre-assembled structure: It makes the installation easier and faster.
 - 2. Easily parking: It allows you to park from any direction.
 - 3. High strength: Its design and materials make the whole structure stronger.



Components List



Technical Features

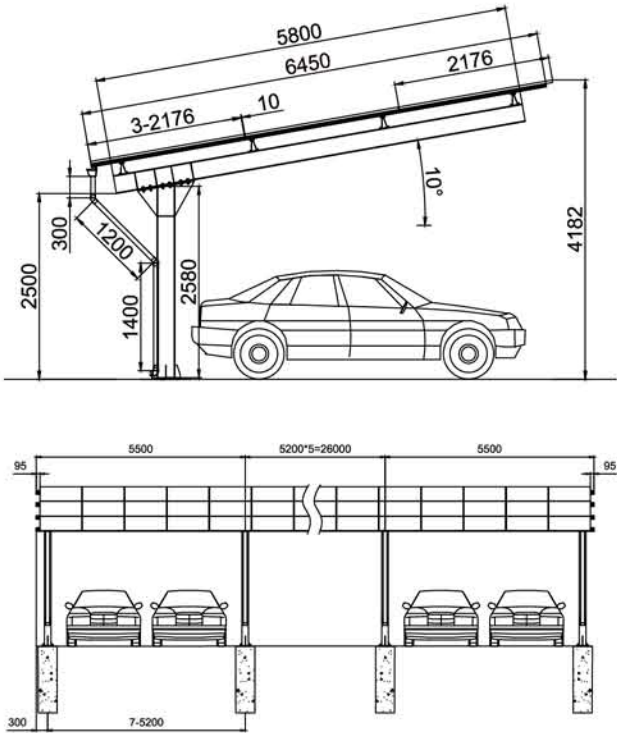
Panel orientation :	Landscape/Portrait
Foundation :	Concrete base
Panel tilt angles :	0-15degrees
Protection :	Q235B Hot Dip Galvanized Steel

Different Types of Carport

1. One Side Carport



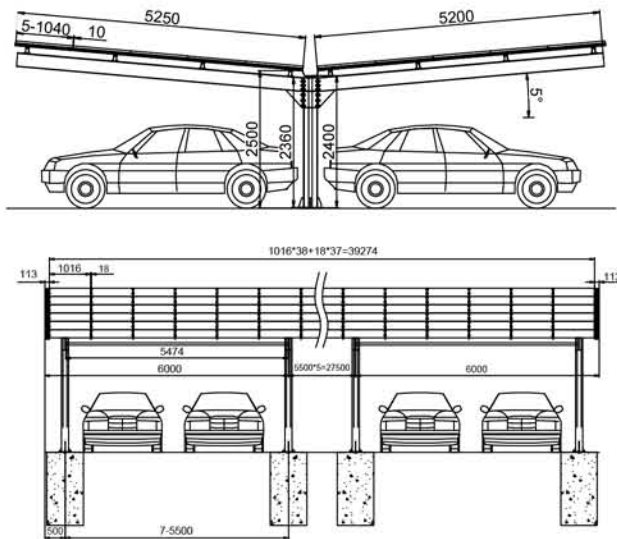
Technical drawing



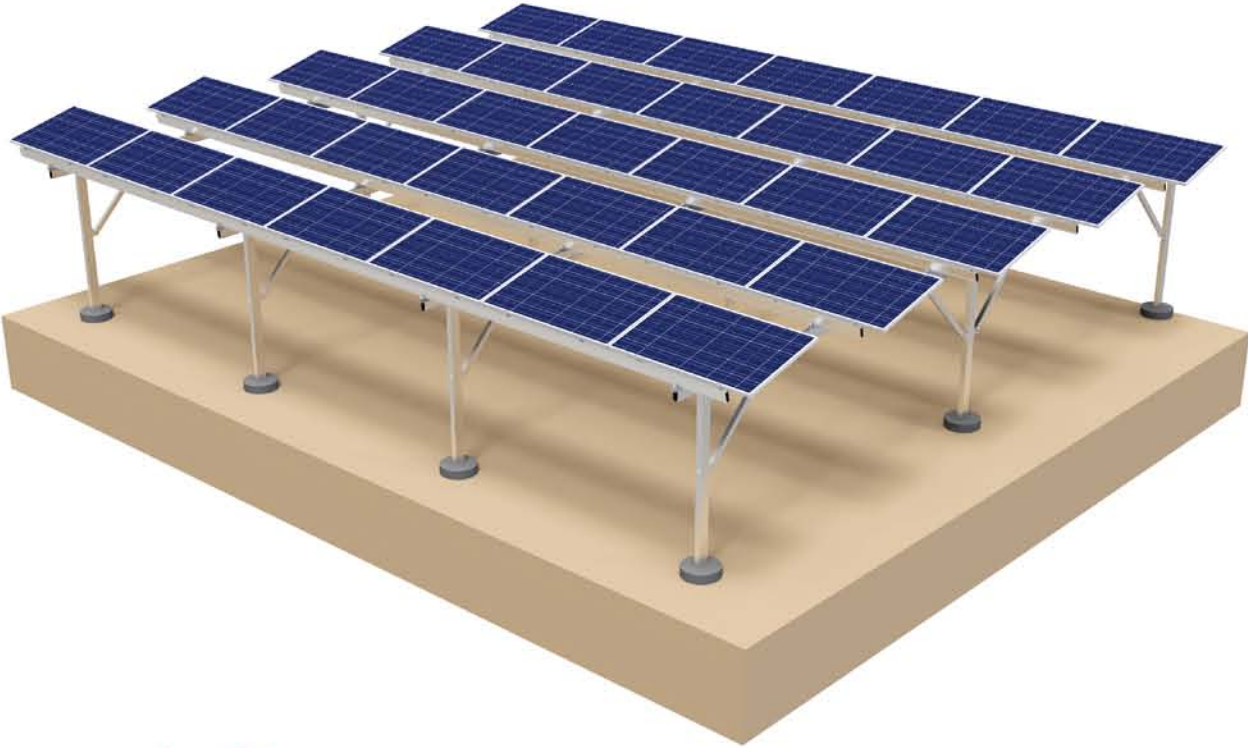
2. Double Sides Carport



Technical drawing



Agricultural solar mounting bracket provides the perfect combination for both electricity generation and farming. It not only generates the energy but also protects plants from the extreme weather and gathers the heat for fast growing.



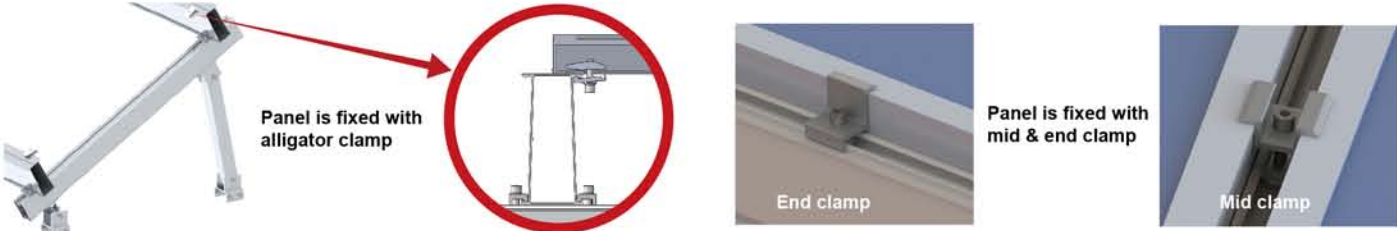
Technical Data

Installation side :	Open field/Ground
Module angle :	0~60 degree
Max wind speed :	Up to 80m/s
Max snow load :	Up to 1.4KN/m2
Material :	AL6005-T5 & SUS304
Module orientation :	Landscape, Portrait
Foundation :	Concrete base, Ground screw
Standard :	AS/NZS S1170, JISC8955:2017



Advantages

1 Multiple choice with clamps



2 Multiple choice with strength

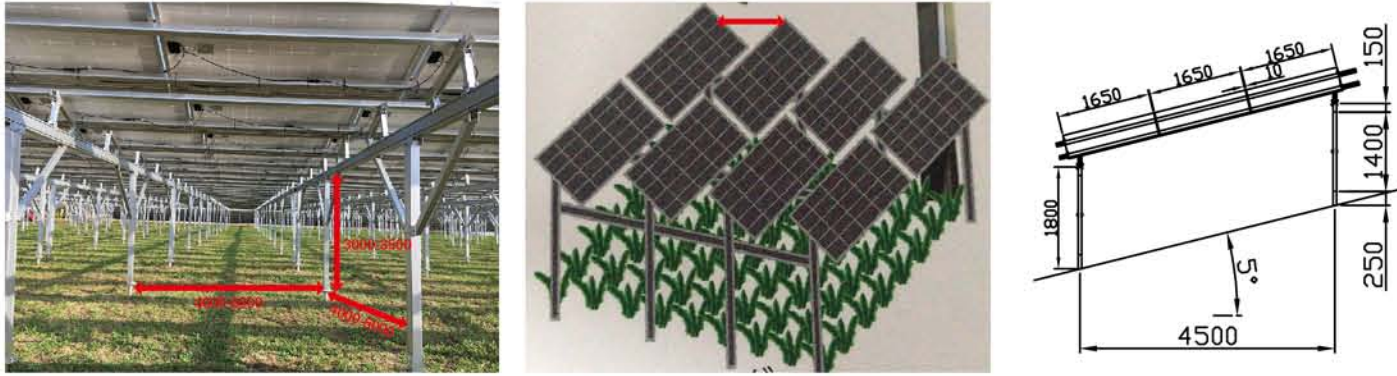


3 Easy for solar farming

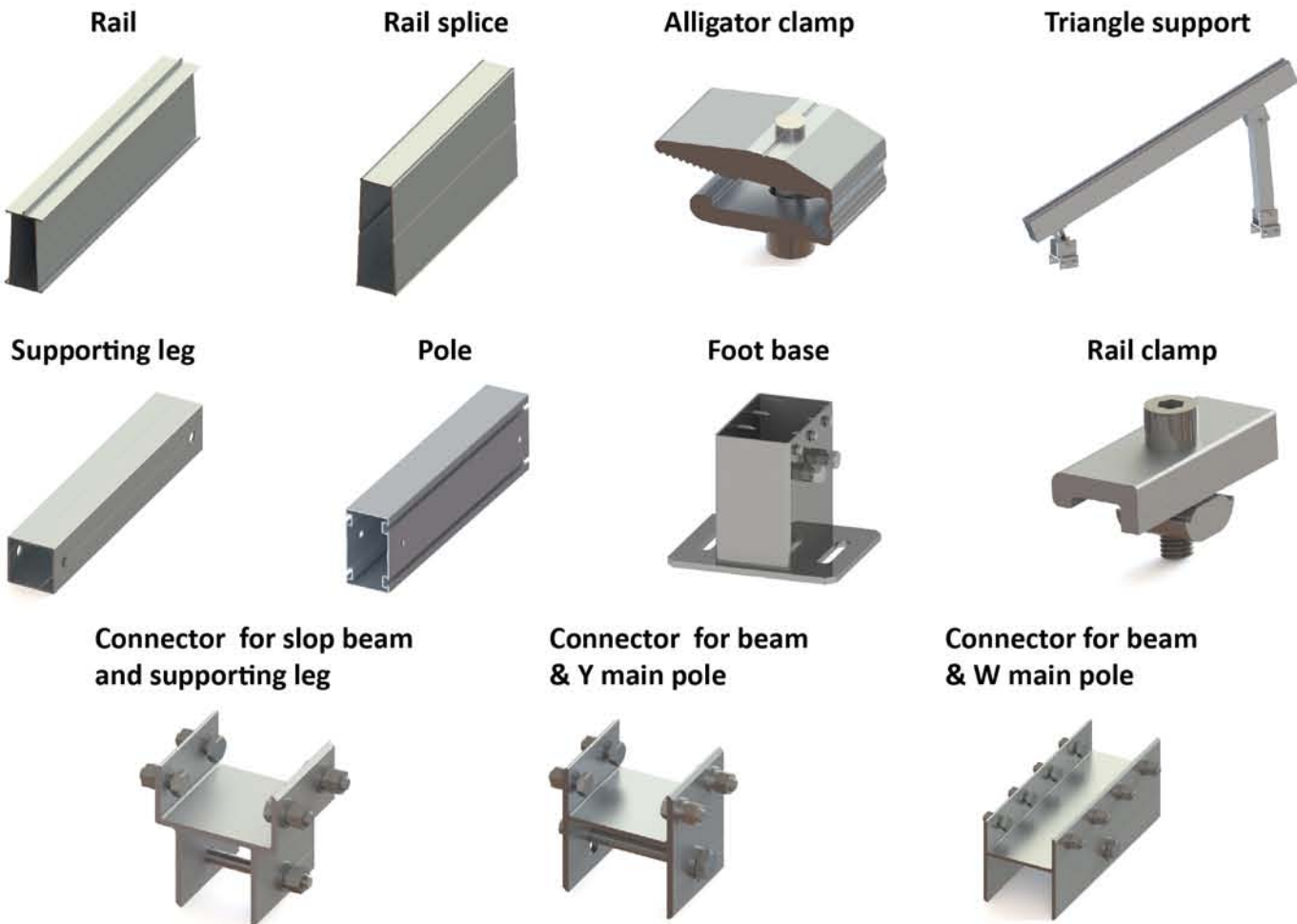
1. Max 6.5*5m length, easy for large machinery to pass in and out.
2. It is easy to do shading rating adjustment by panle layout

4 Deign for sloping ground

Suitable for flat ground, inclined mountain agricultural racking design, effective use of land.



Components List



Fence -- Triangle Bending Fence

Fence is usually used to protect the solar farm from the wild animals, and also for the security purpose. Easy installation and recycling make it to be indispensable and welcomed by the solar projects



Components List

Triangular mesh

Slope connector

Fence clip

J bolt

Double door

Single door

Technical Data

Color :	White, Green, Gray
Surface :	PV Coating
Bolt material :	Q235-A, SUS304
Connection between fence and post :	Connect with fastener
Foundation :	Ground screw ,concrete foundation, pile in type
Wire diameter :	3.5mm 4.0mm
Post diameter :	38mm,48mm thickness: 2.0mm
Fence size :	Width 2.0m height: 0.6m, 0.8m, 1.0m, 1.2m, 1.8m

Fence Height (mm)	Fence Width (mm)	Mesh Dimension (mm)
800	2000	75*150/100*150/150*150
1000	2000	
1200	2000	
1500	2000	
1800	2000	

Foundation for the installation

Type 1

Type 2

Type 3

Type 4

Package



Project Reference



To ensure safety, installing solar mounting requires installation fence.
To prevent accidents caused by nearby children entering.



Components List

Semicircular mesh



Slope connector



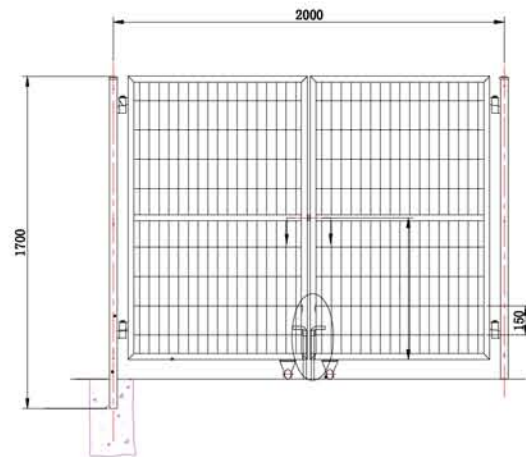
Fence clip



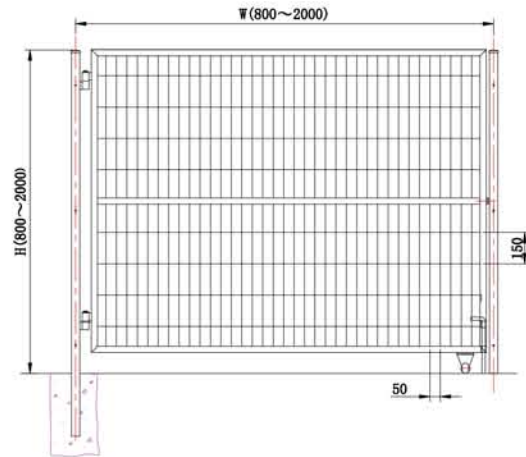
J bolt



Double door



Single door

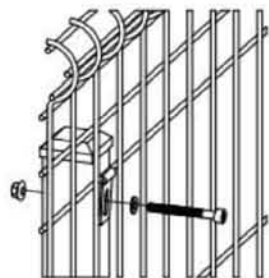


Technical Data

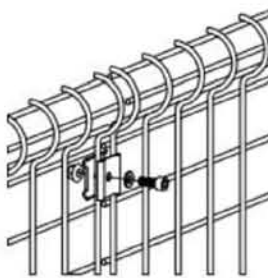
Color :	White, Green, Gray
Surface :	PV Coating
Bolt material :	Q235-A, SUS304
Connection between fence and post :	Connect with fastener
Foundation :	Ground screw ,concrete foundation, pile in type
Wire diameter :	3.5mm 4.0mm
Post diameter :	38mm,48mm thickness: 2.0mm
Fence size :	Width 2.0m height: 0.6m, 0.8m, 1.0m, 1.2m, 1.8m

Fence Height (mm)	Fence Width (mm)	Mesh Dimension (mm)
800	2000	75*150/100*150/150*150
1000	2000	
1200	2000	
1500	2000	
1800	2000	

The connection between fence and post



The connection between fence



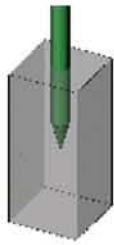
Fastener for sloping area fixing



Foundation for the installation



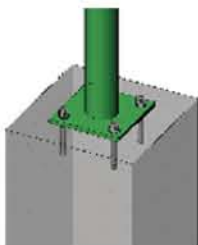
Type 1



Type 2



Type 3



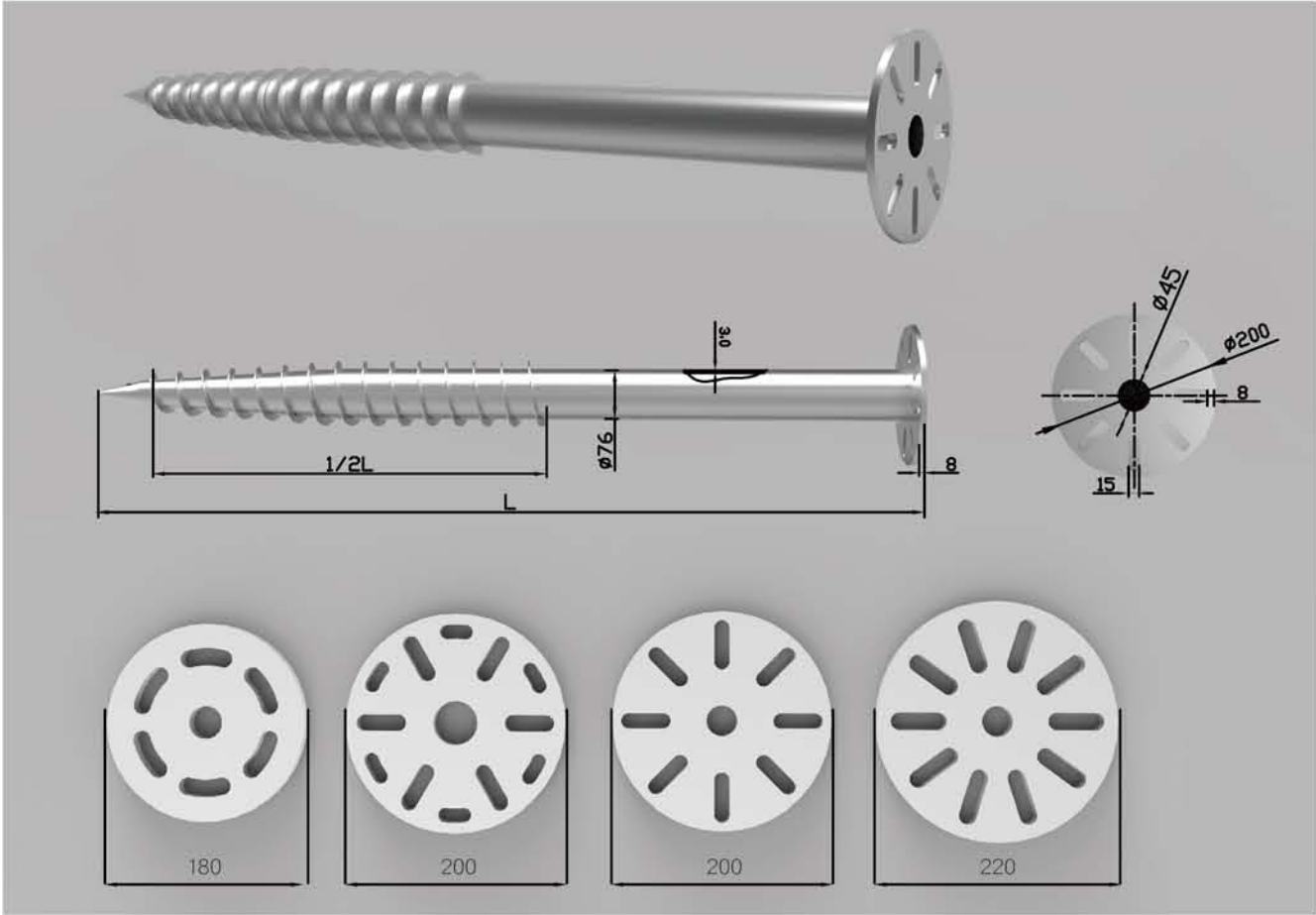
Type 4

Project Reference



Ground Screw

UISOLAR Ground Screw is made of Q235 material. We have flange top and tube top types with different specification. Our standard thickness is 2.75mm, 2.5mm and 3mm and length with 1200mm, 1600mm, 1800mm, 2000mm. The length and size could also be customized. It can be used for many kinds of application, like Timer-Frame Construction; Advertising and Traffic Systems; Urban, Garden and Landscape Construction; Hall and Container Construction; Fencing Systems, Solar Systems; Flag Poles & Banners etc.



Brief Introduction

Material:Q235
Surface:Hot Dip Galvanization
Thickness:3.0mm/2.75mm/2.5mm/3.5mm
Series:Flange Top, Tube Top



Advantages

- 01 Compatibility with all type of structures.**
Our technical department will adapt the head of our ground screw piles to whatever the customer need.
- 02 Foundation solution concrete free**
No need of concrete base.
- 03 Surrounding areas remains unspoiled**
The special configuration of our products allows the insertion without performing land preparation works, which allows a significant cost reduction.
- 04 Easy removal, simple and easy to relocate**
One of the main advantages of our ground screw piles is the possibility of removing them, reducing the environmental impact and minimizing the removing costs.

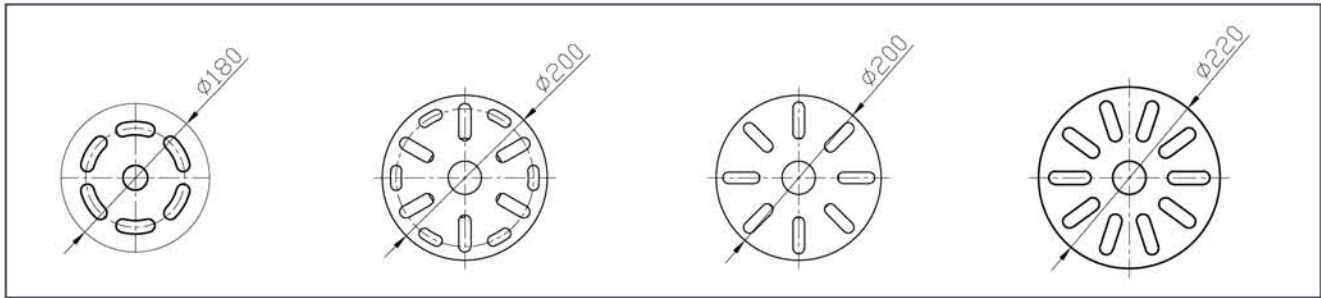
Ground Screw



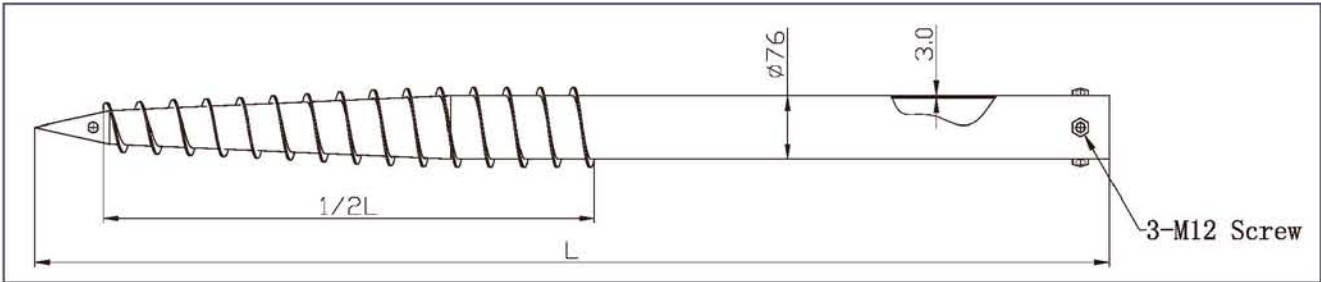
Specification

NO	Code1	Surface	Material	H(mm)	D(mm)	Galvanized Surface	Thickness
01	F76×L— 2	Hot Galvanized	Q235	Customized	76	$\geq 80 \mu\text{m}$	3.5mm/ 2.75mm/ 2.5mm/ 3.0mm
02	F76×L— 4			Customized	76	$\geq 80 \mu\text{m}$	
03	F76×L			Customized	76	$\geq 80 \mu\text{m}$	
04	N76×L			Customized	76	$\geq 80 \mu\text{m}$	
05	F76×L— A			Customized	76	$\geq 80 \mu\text{m}$	

Flange Type



Tube Type



Rails for Ground Mounting



UI-R5

ITEM NO.	MATERIAL	SPEC.	WEIGHT	SURFACE
UI-R5	Al 6005-T5	Customized	-	Anodized



UI-R5A

ITEM NO.	MATERIAL	SPEC.	WEIGHT	SURFACE
UI-R5A	Al 6005-T5	Customized	-	Anodized



UI-60#-70
UI-60#-80

ITEM NO.	MATERIAL	SPEC.	WEIGHT	SURFACE
UI-60#-70 UI-60#-80	Al 6005-T5	Customized	-	Anodized



UI-60#-85
UI-60#-95

ITEM NO.	MATERIAL	SPEC.	WEIGHT	SURFACE
UI-60#-85 UI-60#-95	Al 6005-T5	Customized	-	Anodized



UI-75-130

ITEM NO.	MATERIAL	SPEC.	WEIGHT	SURFACE
UI-75-130	Al 6005-T5	Customized	-	Anodized



UI-10-128

ITEM NO.	MATERIAL	SPEC.	WEIGHT	SURFACE
UI-10-128	Al 6005-T5	Customized	-	Anodized



UI-R11

ITEM NO.	MATERIAL	SPEC.	WEIGHT	SURFACE
UI-R11	Al 6005-T5	Customized	-	Anodized



UI-R8

ITEM NO.	MATERIAL	SPEC.	WEIGHT	SURFACE
UI-R8	Al 6005-T5	Customized	-	Anodized



UI-U

ITEM NO.	MATERIAL	SPEC.	WEIGHT	SURFACE
UI-U	Steel	Customized	-	-



UI-C

ITEM NO.	MATERIAL	SPEC.	WEIGHT	SURFACE
UI-C	Steel	Customized	-	-

Framed Panel Clamps

UI-IC 4



ITEM NO.	MATERIAL	SPEC.	SURFACE
UI-IC4-30	Al 6005-T5	30 mm	Anodized
UI-IC4-35	Al 6005-T5	35 mm	Anodized
UI-IC4-40	Al 6005-T5	40 mm	Anodized
UI-IC4-45	Al 6005-T5	45 mm	Anodized

UI-IC-III



ITEM NO.	MATERIAL	SPEC.	SURFACE
UI-IC-III-30	Al 6005-T5	30 mm	Anodized
UI-IC-III-35	Al 6005-T5	35 mm	Anodized
UI-IC-III-40	Al 6005-T5	40 mm	Anodized
UI-IC-III-45	Al 6005-T5	45 mm	Anodized

UI-EC III



ITEM NO.	MATERIAL	SPEC.	SURFACE
UI-EC III-30	Al 6005-T5	30 mm	Anodized
UI-EC III-35	Al 6005-T5	35 mm	Anodized
UI-EC III-40	Al 6005-T5	40 mm	Anodized
UI-EC III-45	Al 6005-T5	45 mm	Anodized

UI-IC-ST2



ITEM NO.	MATERIAL	SPEC.	SURFACE
UI-IC-ST2-30	Al 6005-T5	30 mm	Anodized
UI-IC-ST2-35	Al 6005-T5	35 mm	Anodized
UI-IC-ST2-40	Al 6005-T5	40 mm	Anodized
UI-IC-ST2-45	Al 6005-T5	45 mm	Anodized

UI-EC-ST2



ITEM NO.	MATERIAL	SPEC.	SURFACE
UI-EC-ST2-30	Al 6005-T5	30 mm	Anodized
UI-EC-ST2-35	Al 6005-T5	35 mm	Anodized
UI-EC-ST2-40	Al 6005-T5	40 mm	Anodized
UI-EC-ST2-45	Al 6005-T5	45 mm	Anodized

UI-IC 5A



ITEM NO.	MATERIAL	SPEC.	SURFACE
UI-IC 5A-30	Al 6005-T5	30 mm	Anodized
UI-IC 5A-32	Al 6005-T5	32 mm	Anodized
UI-IC 5A-35	Al 6005-T5	35 mm	Anodized
UI-IC 5A-40	Al 6005-T5	40 mm	Anodized

UI-EC 5A



ITEM NO.	MATERIAL	SPEC.	SURFACE
UI-EC 5A-30	Al 6005-T5	30 mm	Anodized
UI-EC 5A-32	Al 6005-T5	32 mm	Anodized
UI-EC 5A-35	Al 6005-T5	35 mm	Anodized
UI-EC 5A-40	Al 6005-T5	40 mm	Anodized

Thin Film Solar Clamps

UI-IC-Type4



ITEM NO.	MATERIAL	SPEC.	SURFACE
UI-IC-Type4	Al 6005-T5	For Thin Film Panel (No Bolt,No Nut)	Anodized

UI-EC-Type4



ITEM NO.	MATERIAL	SPEC.	SURFACE
UI-EC-Type4	Al 6005-T5	For Thin Film Panel (No Bolt,No Nut)	Anodized

Regular Nut

St1 Nut



ST3 Nut



ST2 Nut



Flange Nut



Hex Nut



ST6 Nut



Grounding Components

UI-GL



UI-BJ



UI-BJ2



UI-GW



UI-GW2



UI-GW 3



UI-GW (R5A/R5B)



UI-GW 4



UI-GW-5#

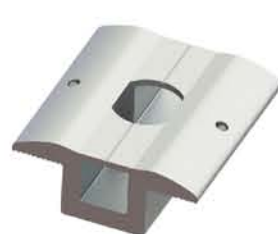


Clamps with Grounding Pins

UI-IC-5A-(G)



UI-IC 4(G)



UI-IC-(G)



UI-EC-(G)



UI-CC1



1-2 Cables

UI-CC2



3-4 Cables

UI-CC3



1-2 Cables

UI-CC4



1-2 Cables

UI-CC5



1-2 Cables

UI-CC6



3-4 Cables

Cable Tray

Cable Tray 1



Cable Tray 2



Solar cable 1.5mm2~35mm2



MC4 Extension cable



MC4 Connector



Multi-T-Branch-MC4-Connector



MC4 T 1-3branch pv connector



Y branch MC4 Connector





10MW in Mongalia



3MW in Japan



200KW in Qatar



50kw in Japan



1MW in Japan



3MW in Spain



6MW in Japan



5MW in Japan



1MW in Japan



50kw in Japan



2MW in Kenya



200kw in Dubai



700kw in Bangal



500kw in Oman



2MW in Indonesia



1MW in Japan