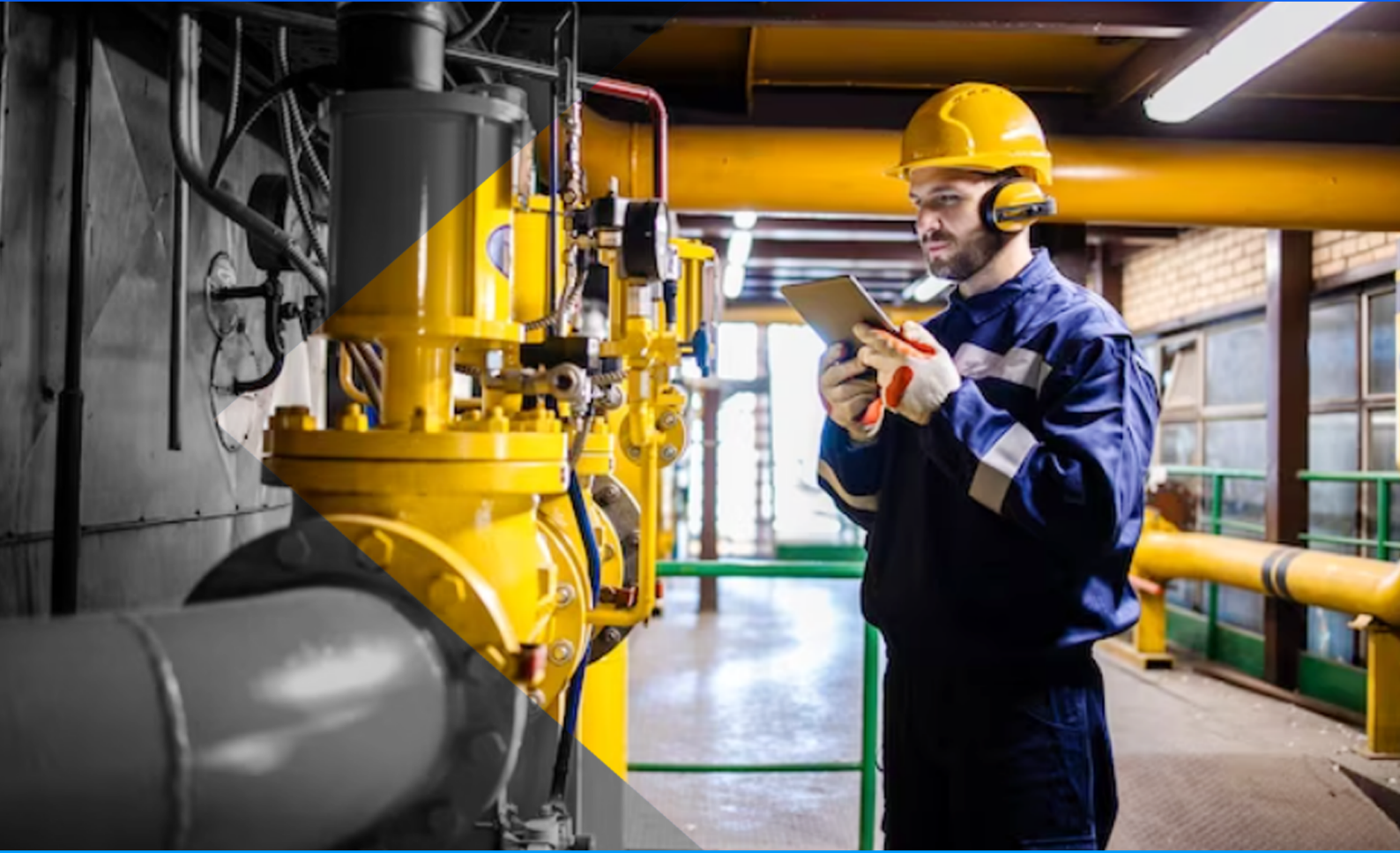




الرابط الجديد New Link

رؤية
VISION
2030
المملكة العربية السعودية
KINGDOM OF SAUDI ARABIA

“Your Link to Quality ”



www.newlink.sa

PIPELINE

Valves, Fittings, Hangers

BUTTERFLY VALVE

A **Butterfly Valve** is a type of quarter-turn valve used to control the flow of a fluid (liquid or gas) through a pipeline. It gets its name from the metal disc or "butterfly" that operates within the valve to control the flow. Butterfly valves are popular for a wide range of industrial and commercial applications due to their ease of use, cost-effectiveness, and efficient flow control. The type of butterfly valve chosen depends on the specific requirements of the application, including pressure, temperature, and the nature of the fluid being controlled.



300PSI
Grooved-End
(Close)



300PSI and 363PSI
Wafer Type (Close)



363PSI
Grooved-End
TB (Open)



Handle Type
Grooved -End



Handle Type
Shoulder -End



300PSI
Grooved-End
(Open)



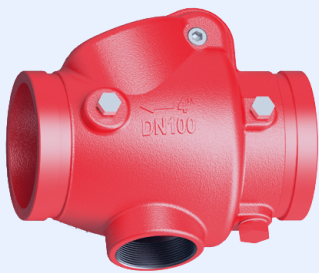
300PSI and 363PSI
Wafer Type (Open)



363PSI
Grooved-End
TB (Open)

CHECK VALVE

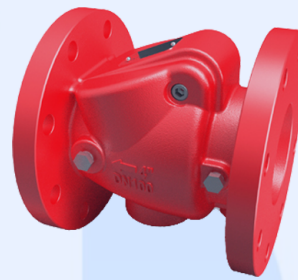
A **Check Valve**, also known as a non-return valve or one-way valve, is a mechanical device used in fluid systems to allow the flow of a fluid (liquid or gas) in one direction while preventing backflow in the opposite direction. It serves as a one-way door for fluid in a pipeline. Check valves are commonly employed in a variety of applications to maintain the flow of fluids in a single direction and to prevent reverse flow.



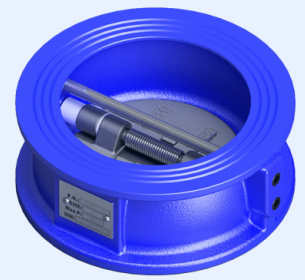
Riser Type
Grooved-End



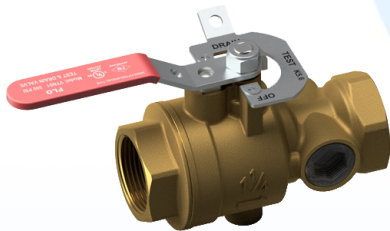
Swing Type
Grooved-End



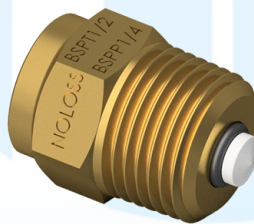
Flanged Edge
Swing Type



Double Plate
Wafer Type



Test & Drain Valve



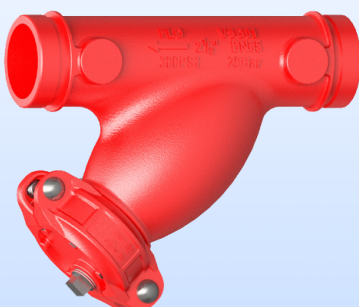
Guage Check Valve



Angle Valve
with Hydrolator



Angle Valve



Y Type Grooved-End



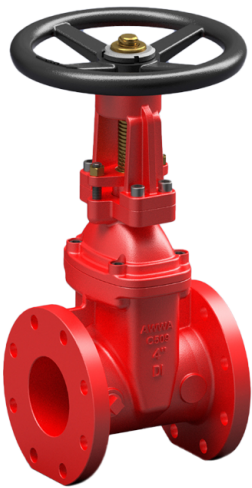
Indicator Post



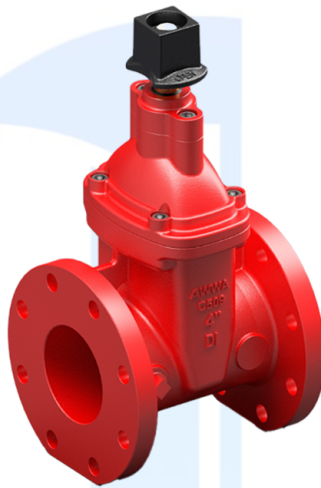
Dry Barrel
Fire Hydrant

GATE VALVE

A gate valve is a type of linear-motion valve used to control the flow of fluids (liquids or gases) within a piping system. Gate valves are often employed in applications where a full, unobstructed flow path is required, and they are particularly well-suited for on/off control of the flow.



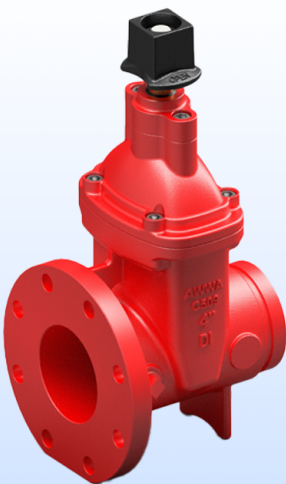
OS&Y Flanged-End



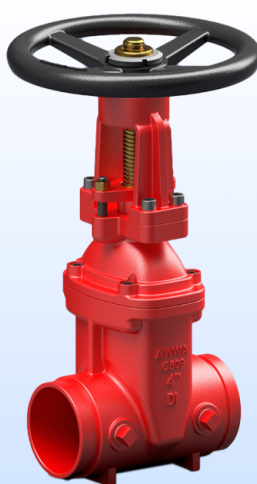
NRS Flanged-End



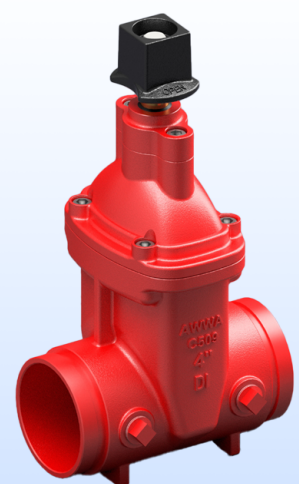
OS&Y Flanged & Grooved-End



NRS Flanged & Grooved-End



OS&Y Grooved-End



NRS Grooved-End

PIPE HANGERS

A **Pipe Hanger**, also commonly referred to as a pipe support or pipe clamp, is a device used to support and secure pipes, tubing, or conduits in various construction and industrial applications. Pipe hangers are essential for maintaining the integrity and stability of a piping system by preventing sagging, shifting, or excessive movement of the pipes.



Swivel Hanger



Swivel Hanger
with Flared Edges 1/2 in - 8in



Swivel Hanger
Heavy Duty 2 in - 8in



Surge Restraint



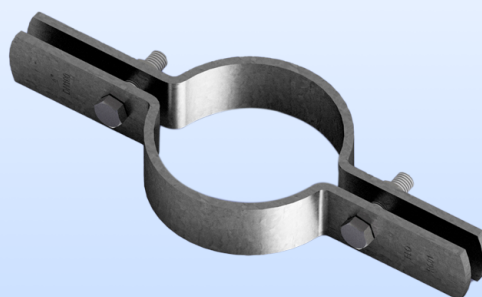
Clevis Hanger



Light Duty
Clevis Hanger



Light Duty
Clevis Hanger with Rubber



Riser Clamp



Light Duty
Riser Clamp

PIPE HANGERS



Light Duty Riser Clamp
with Rubber



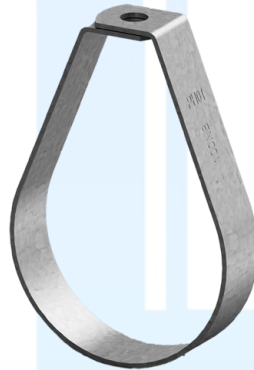
Standard Pipe Clamp



Cup Nut Pipe Loop



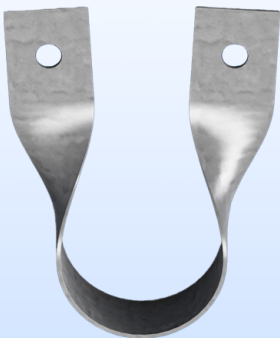
Beam Clamp



Pear Hanger



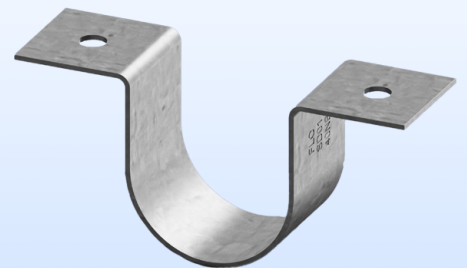
Two Piece Clamps



Twist Clips



Saddle

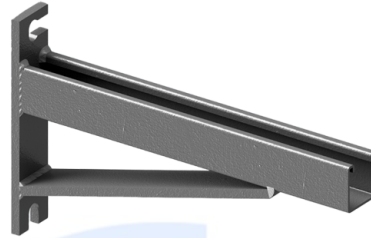


Light Duty Saddle

PIPE HANGERS



Rubber Lined
Pipe Clamp



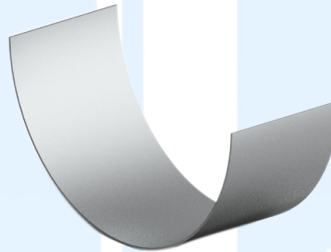
Cantilever Bracket



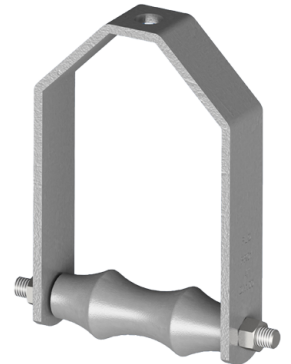
U-Bolts



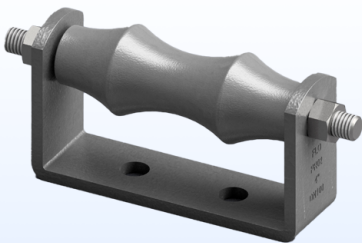
Pipe Covering Protection Saddle



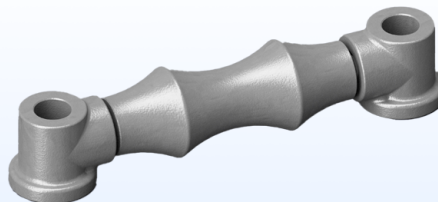
Load Distributing Sleeves



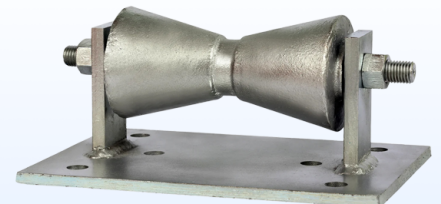
Roller Hanger



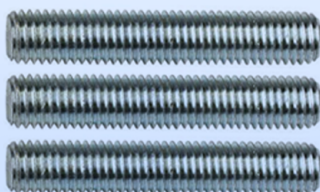
Roller Chair



Roller Support



Roller Stand



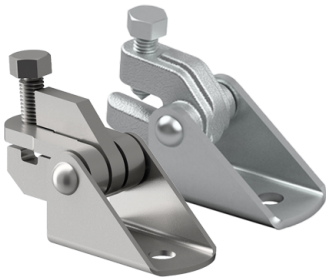
Thread Rod



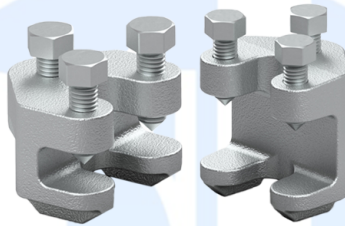
Channel

SWAY BRACING

A **Sway Bracing**, also known as bracing or sway control, is a structural engineering technique used to provide stability and control the lateral movement or swaying of tall structures, such as buildings and towers. The primary purpose of sway bracing is to ensure the safety and structural integrity of these constructions, particularly in areas with high wind loads, seismic activity, or other lateral forces that can induce swaying or vibrations.



Structural Attachment



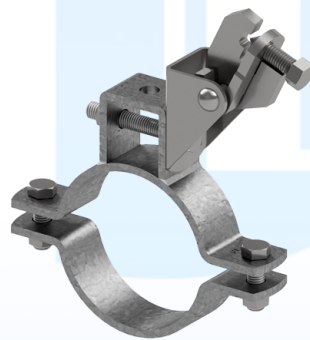
Beam Attachment



Beam Attachment



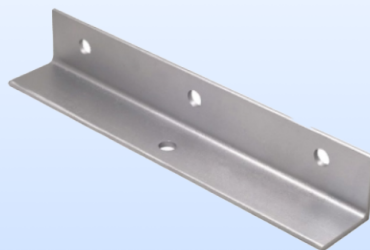
Quick Bracing Clamp



Yolk Bracing Clamp



4 Way Adaptor



Structural Fitting

CPVC HANGER

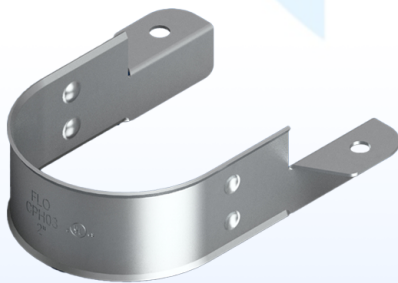
A **CPVC Hanger** is a support device used in plumbing and piping systems to secure and hold CPVC (Chlorinated Polyvinyl Chloride) pipes in place. CPVC is a type of plastic pipe commonly used for hot and cold water distribution in residential and commercial buildings. The hangers are designed to provide proper support to the CPVC pipes, preventing sagging or movement.



Two-Hole Pipe Strap



Two-Hole Stand Offset Strap



Two-Hole Side Mount Strap



One-Hole Wrap Around Strap

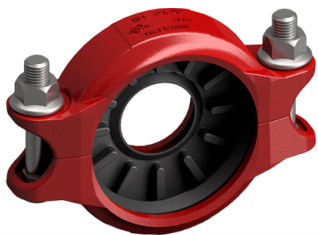
PIPE FITTING

Pipe Fitting is a process of connecting or joining pipes and tubing systems to ensure proper flow of liquids, gases, or other substances. It involves the installation and assembly of various components like pipes, valves, elbows, tees, couplings, and other fittings to create a functional piping system. Pipe fittings can be made from materials such as metal, plastic, or other materials, and they come in various shapes and sizes to accommodate different applications.

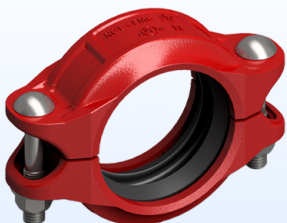
COUPLINGS



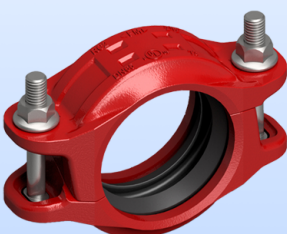
FC1 Flexible Couplings



RF1 Reducing Flexible Couplings



RC1 Rigid Couplings



RC2 Rigid Couplings

ELBOW & TEE



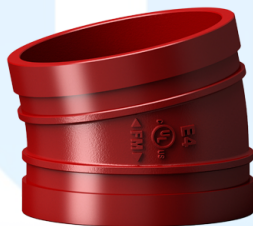
SE1 90° Elbow Short Radius



E2 45° Elbow



E3 22.5° Elbow



E4 11.25° Elbow



E1 90° Elbow



EE1 End - All Elbow



DE1 Drain Elbow



T1 Tee



ST1 Tee Short Radius



RT1 Reducing Tee



ST2 Tee Short Radius



Bullhead Tee



PIPE FITTING

CROSS



C1 Cross

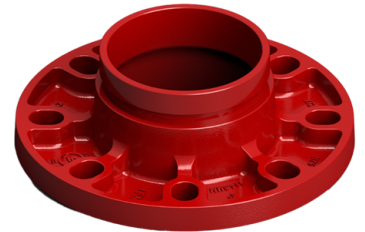


SC1 Cross

FLANGE



FA1 Grooved Flange



FA2 Flange Adapter

REDUCER



CR2 Concentric Reducer



CR2 Concentric Reducer



ER1 Eccentric Concentric Reducer

SS FITTINGS

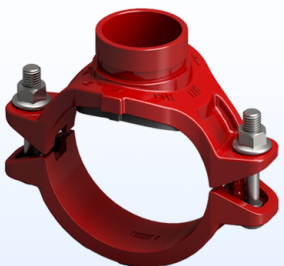


Rigid Coupling

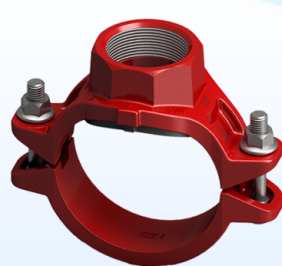


Flexible Coupling

MECHANICAL TEE

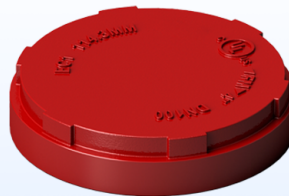


MT1 Mechanical Tee

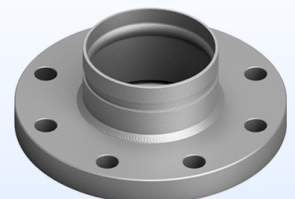


MT2 Mechanical Tee

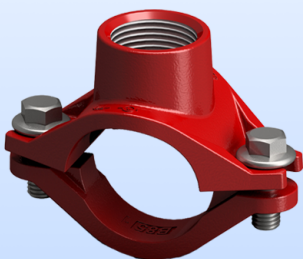
CAP



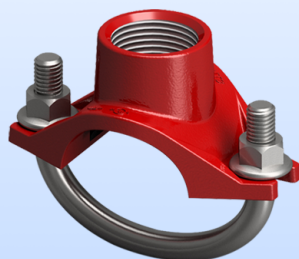
EC1 End Cap



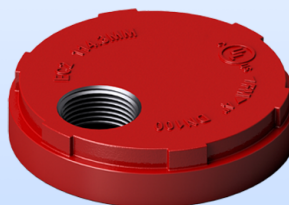
Flange Adaptor



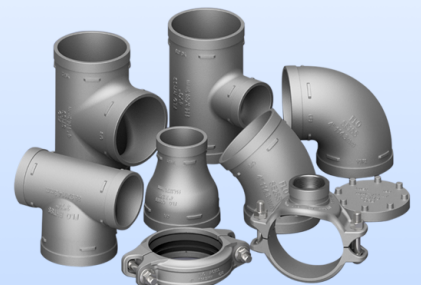
MT3 Mechanical Tee



UM1 Mechanical Tee



EC2 Drain Cap



Grooved Fittings

FIRE PROTECTION COMPONENTS

Fire Protection Components are essential elements of fire safety systems designed to detect, suppress, control, or extinguish fires in various settings. These components are crucial for safeguarding people, property, and assets. Understanding these components is essential for ensuring compliance with safety regulations and designing effective fire protection systems.

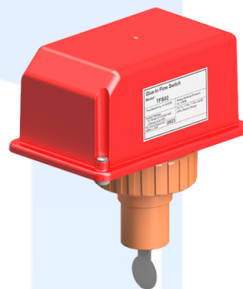
FIRE ALARM EQPT.



T-tap Flow Switch



Supervisory Pressure Switch



Glue-In Flow Switch



Detected Pressure Switch



Commercial Flow Switch

SPRINKLERS



Standard Response Sprinkler



Quick Response Sprinkler

WELDED OUTLET



Welded Outlet Threaded

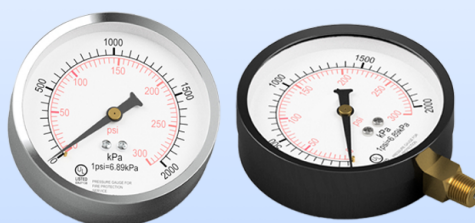


Welded Outlet Cut Grooved



Welded Outlet Roll Grooved

PRESSURE GAUGE



Pressure Gauge



“Your Link to Quality ”



New Link Co.
Second Floor, Office 23
3120 Al Azizia Road
7754 Riyadh 14511, KSA

www.newlink.sa